

# Pad Printer

القائمة الرئيسية

# 3-Pads

---

# Pad Printing Pads



## Introduction To Pad Printing Pads

Pad printing pads are made with a special silicone rubber with the following characteristics:

- Excellent adhesion and detachment of the ink allowing a perfect transfer of the image to be printed

- Strength and resistance to solvents and inks for pad longevity

the shape you need, we have a full pad department that will custom design and manufacture the

- Hardness and form stability.

Engineered Printing Solutions carries all commonly used pad printing pads — cylindrical, rectangular pads linear printing pads compound as well as MARKEM® pads. If you do not see pad for your pad print application.

# Square & Rectangular Pads



## Square & Rectangular Print Pads

carries all commonly used pad printing pads — cylindrical rectangular pads linear printing pads If you do not see the shape you need . we have a full pad department that will custom design and manufacture the pad for your pad print application.

Rectangular pads range in size from 8mm x 28mm to 240mm x 120mm with flat peaked rounded or conical tops. The pad base can vary in thickness and is not included in the pad height dimension which is measured in millimeters. Any pad can be ordered with a durometer rating from 10 to 85 on the Shore 00 Hardness Scale with ten being the softest and 85 being the hardest.





260

Printable Area: 95mm (3.74") x 40mm (1.57")



262

Printable Area: 50mm (1.97") x 37mm (1.46")



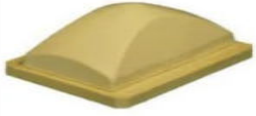
265

Printable Area: 140mm (5.51") x 30mm (1.18")



267

Printable Area: 65mm (2.56") x 45mm (1.77")



270

Printable Area: 80mm (3.15") x 25mm (0.98")



272

Printable Area: 55mm (2.17") x 30mm (1.18")



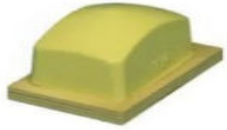
275

Printable Area: 35mm (1.38") x 20mm (0.79")



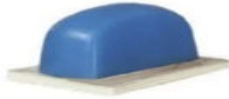
278

Printable Area: 41mm (1.61") x 23mm (0.91")



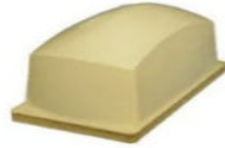
279

Printable Area: 58mm (2.28") x 32mm (1.26")



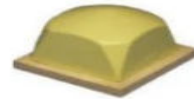
280

Printable Area: 120mm (4.72") x 35mm (1.38")



281

Printable Area: 185mm (7.28") x 80mm (3.15")



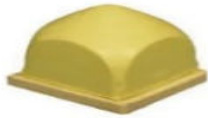
283

Printable Area: 60mm (2.36") x 60mm (2.36")



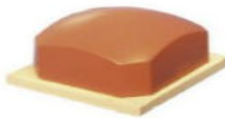
289

Printable Area: 160mm (6.30") x 85mm (3.35")



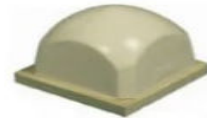
302

Printable Area: 70mm (2.76") x 70mm (2.76")



308

Printable Area: 65mm (2.56") x 60mm (2.36")



315

Printable Area: 5mm (1.77") x 45mm (1.77")



317

Printable Area: 60mm (2.36") x 50mm (1.97")



320

Printable Area: 35mm (1.38") x 22mm (0.87")



325

Printable Area: 110mm (4.33") x 90mm (3.54")



327

Printable Area: 95mm (3.74") x 70mm (2.76")



329

Printable Area: 65mm (2.56") x 33mm (1.30")



335

Printable Area: 55mm (2.17") x 45mm (1.77")



339

Printable Area: 65mm (2.56") x 50mm (1.97")

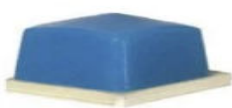


352

Printable Area:



353



354



361



364

# Linear Print Pads



**Linear Print Pads**

carries all commonly used pad printing pads — cylindrical rectangular pads linear printing pads. If you do not see the shape you need we have a full pad department that will custom design and manufacture the pad for your pad print application.

The length of a linear print pad is limited only by the ability of the machine to uniformly compress the pad. The pad base can vary in thickness and is not included in the pad height dimension.

<p>30</p> <p>Printable Area: 580mm (22.83") x 15mm (0.59")</p>	<p>161</p> <p>Printable Area: 1,070mm (42.12") x 25mm (0.98")</p>	<p>219</p> <p>Printable Area: 100mm (3.94") x 10mm (0.39")</p>	<p>226</p> <p>Printable Area: 190mm (7.48") x 10mm (0.39")</p>	<p>288</p> <p>Printable Area: 95mm (3.74") x 45mm (1.77")</p>	<p>292</p> <p>Printable Area: 95mm (3.74") x 45mm (1.77")</p>	<p>303</p> <p>Printable Area: 95mm (3.74") x 60mm (2.36")</p>	<p>305</p> <p>Printable Area: 95mm (3.74") x 35mm (1.38")</p>
		<p>237</p> <p>Printable Area: 80mm (3.15") x 45mm (1.78")</p>				<p>306</p> <p>Printable Area: 330mm (12.99") x 120mm (4.72")</p>	
<p>254</p> <p>Printable Area: 80mm (3.15") x 32mm (1.26")</p>	<p>266</p> <p>Printable Area: 130mm (5.12") x 50mm (1.97")</p>	<p>276</p> <p>Printable Area: 95mm (3.74") x 60mm (2.36")</p>	<p>284</p> <p>Printable Area: 250mm (9.84") x 15mm (0.59")</p>	<p>329</p> <p>Printable Area: 65mm (2.56") x 33mm (1.30")</p>	<p>341</p> <p>Printable Area: 290mm (11.42") x 10mm (0.39")</p>	<p>345</p> <p>Printable Area: 47mm (1.85") x 20mm (0.79")</p>	<p>346</p> <p>Printable Area: 75mm (2.95") x 10mm (0.39")</p>

# Custom Print Pads



Custom Print Pads

carries all commonly used pad printing pads cylindrical rectangular pads linear printing pads,

If you do not see the shape you need we have a full pad department that will custom design and manufacture the pad for your pad print application.

## Ordering Custom Pads

If you've got a part to print that needs a unique one-of-a-kind shaped pad we can work with you to craft the perfect pad. Our pad department can take your part and create a pad that will print in all your nooks and crannies perfectly every time for hundreds of thousands of imprints.

Already have a unique pad that works? We'll build you a mold for your special pad so you can get another one just like the other one again and again.

The pad base can vary in thickness and is not included in the pad height dimension.

## Some Examples Of Custom Pad Printing Pads



# Cylindrical Print Pads



carries all commonly used pad printing pads.  
 cylindrical rectangular pads linear printing pads  
 If you do not see the shape you need we have a full pad.  
 department that will custom design and manufacture the pad for your pad print  
 application.

Cylindrical pads range from as small as pencil erasers to as large as a helmet.  
 The pad base can vary in thickness and is not included in the pad height dimension.

 213 Printable Area: 37mm (1.4") D: 70mm (2.75")	 214 Printable Area: 15mm (.59") D: 42mm (1.65")	 218 Printable Area: 10mm (.39") D: 36mm (1.41")	 220 Printable Area: 30mm (1.18") x 65mm (2.56")
 234 Printable Area: 30mm (1.18") D: 78mm (3.07")	 238 Printable Area: 45mm (1.77") D: 87mm (3.43")	 239 Printable Area: 24mm (0.94") D: 65mm (2.56")	 240 Printable Area: 25mm (0.98") D: 65mm (2.56")



241

Printable Area: 40mm (1.57") D: 74mm (2.91")



244

Printable Area: 30mm (1.18") D: 80mm (3.15")



246

Printable Area: 80mm (3.15") D: 106mm (4.17")



247

Printable Area: 25mm (0.98") D: 42mm (1.65")



249

Printable Area: 33mm (1.3") D: 50mm (1.97")



250

Printable Area: 40mm (1.57") D: 62mm (2.44")



268

Printable Area: 30mm (1.18") D: 48mm (1.89")



282

Printable Area: 80mm (3.15") D: 130mm



297

Printable Area: 38mm (1.5") D: 75mm (2.95")



318

Printable Area: 40mm (1.57") D: 80mm (3.15")



321

Printable Area: 75mm (2.95") D: 130mm (5.12")



324

Printable Area: 65mm (2.56") D: 82mm (3.23")



333

Printable Area: 75mm (2.95") D: 100mm (3.94")



337

Printable Area: 60mm (2.36") D: 109mm (4.29")



338

Printable Area: 110mm (4.33") D: 156mm (6.14")



343

Printable Area: 18mm (0.71") D: 32mm (1.26")



344

Printable Area: 20mm (0.79") D: 32mm (1.26")



377

Printable Area: 30mm (1.18") D: 53mm (2.09")



397

Printable Area: 65mm (2.56") D: 84mm (3.31")



408

Printable Area: 50mm (1.97") D: 73mm (2.87")



425

Printable Area: 15mm (0.59") D: 39mm (1.54")



460

Printable Area: 40mm (1.57") D: 58mm (2.28")



461

Printable Area: 22mm (0.87") D: 32mm (1.26")



478

Printable Area: 28mm (1.1") D: 30mm (1.18")